



25  
YEARS  
of Bringing Hope

---

# Silver Anniversary Annual Report





# Index

---



By the Numbers .....	Page 2
Chairperson's Report .....	Page 3
Executive Director's Report .....	Page 4
Eastern Cape .....	Page 5
Community Based Health Services .....	Page 6
Agricultural Training .....	Page 7
Health Care Centre .....	Page 8
Family Strengthening .....	Page 9
Recovery .....	Page 10
Life Skills Education .....	Page 11
Training and Wellness .....	Page 12
Community Response .....	Page 13
Chaplaincy .....	Page 14
Monitoring and Evaluation .....	Page 15
Strategic Developments .....	Page 16
Human Resources .....	Page 17
Finance .....	Page 18
Donor Acknowledgements .....	Page 19
Opportunities to Partner .....	Page 20
Connect with Us .....	Page 21





**88%**  
Occupancy  
at the HCC

**11**  
Agricultural  
Graduates



**79**  
Disability Support  
Groups individuals

**291**  
Volunteers  
& Students

**74,449**  
attendances at  
Life Skill Clubs

**2,741**  
HIV Tests done in  
the Eastern Cape



**7,646**  
HIV Tests done in  
the Western Cape

**441**  
Children received  
Uniforms &  
Backpacks

**1,343**  
Grant referral  
services and food  
relief support

**4,245**  
Meals to Child-  
Headed Homes





121,412

Individuals  
Served

livinghope  
25  
YEARS  
of Bringing Hope

## Chairperson's Report

It is my privilege to present this Chairperson's report for Living Hope's Annual General Meeting. My heart overflows with gratitude to God for His faithfulness. Living Hope continues to be a beacon of hope in Cape Town and beyond, bringing the love of Christ in practical and life-changing ways. This report covers the period of April 2024- March 2025.

This past year, **121,412** people were served through our programmes, each one a story of God's grace at work. From Healthcare, Substance Abuse Recovery, Life Skills, Agricultural Training, Family Strengthening and Community Response we have witnessed lives transformed and hope restored.

I wish to extend my deepest thanks to our dedicated Board of Trustees: Sipho Zondi (Deputy Chairman), Julie Buissuine (Treasurer), Devon Retief, John Thomas, Mark Schafer, Lungi Nyathi, and George Smith. Your wisdom, prayer, and steadfast governance have been instrumental in guiding Living Hope through another impactful year.

To Victor Thomas, our outstanding Executive Director, thank you for leading with vision, faith, and a servant heart. Your leadership has inspired not only our staff and volunteers but also those of us privileged to serve alongside you.

One of my personal highlights this year was visiting our new work in Mzamomhle, Eastern Cape. To see first hand the seeds that were planted now bearing fruit in a community marked by deep need was profoundly moving. It is a reminder that what we do is not simply about numbers; it's about lives, families, and communities being transformed by hope.

As we look ahead, I am filled with expectancy. The needs around us remain great, but our God is greater. Together, we will continue to serve, to innovate, and to be faithful stewards of the mission He has entrusted to us.

Thank you to every donor, volunteer, staff member, and friend of Living Hope. Your prayers, generosity, and partnership make this Kingdom work possible. To God be the glory for all that has been accomplished and for all that is yet to come!

With gratitude and hope.

**By Neil Smith,**  
**Chairman of the Board, Living Hope**





## Executive Director's Report

This year, we celebrate a remarkable milestone—**25 years of ministry**. It is a testimony to God's faithfulness and the unwavering support of partners like you, who have enabled us to serve hundreds of thousands over the past quarter-century. As we honour this legacy, we also look forward with hope and determination to the next 25 years. Thank you for making this life-changing work possible.

This past year has been one of significant growth, strategic clarity, and steadfast commitment to our mission: to Bring Hope, Break Despair, and Build Africa. Thanks to your partnership, we served over **121,412 individuals** through **1,836,910 people-centred interventions**. These numbers represent more than impact; they reflect lives transformed, families restored, and communities strengthened. We opened our new Eastern Cape facility and launched agricultural programming in one of South Africa's most underserved provinces. We also marked 20 years of compassionate care at our Health Care Centre and saw our Chaplaincy, Recovery, Family Strengthening, and Community Health teams reach new heights. Financially, we ended the year strong, launching the Legacy of Hope Endowment Fund to prepare for the future, and investing in solar power and infrastructure to ensure long-term sustainability.

Our 20-year vision is to see Living Hope transforming communities across Africa. To guide us, we've identified four strategic "mountains" to climb over the next three years: **1. Advancement** – *Building a strong development team and sustainable funding strategies, including endowments and Corporate Social Responsibility partnerships.* **2. Three Provinces and Growing** – *Expanding into new provinces with replicable systems that ensure impactful growth.* **3. Innovating for Impact** – *Simplifying processes, leveraging data, and embedding a rhythm of accountability through the Entrepreneurial Operating System (EOS) framework.* **4. Prioritising Wellness** – *Equipping staff and clients holistically, spiritually, emotionally, physically, and financially, for lasting transformation.* We've already achieved 59% of our three-year goals in the first year. A key theme this year is our "7S" strategy, Simplifying and Strengthening, which continues to guide our daily work, making life easier for staff and more impactful for those we serve.

Looking ahead, we are excited to welcome Morning Star in the Free State and integrate Hope Africa Collective's skills development programmes in Philippi. These partnerships will multiply our reach and deepen our impact. The Psalmist writes in Psalm 92:12–14: *"The righteous will flourish like a palm tree, they will grow like a cedar of Lebanon; planted in the house of the Lord, they will flourish in the courts of our God. They will still bear fruit in old age, they will stay fresh and green."* Like a flourishing tree, we are growing, offering shade to the weary, nourishment to the hungry, restoration to the broken, and empowering refreshment to all we serve. Thank you for being part of this journey. Together, we are building a legacy of hope.

**By Victor Thomas**  
**Executive Director, Living Hope**



19,110

Individuals  
Served

199,900

Impact  
Interventions

Scan Me



## Eastern Cape

*Our Eastern Cape team provides love, care and support to the communities surrounding East London in the form of Community Based Care, Life Skills Education, Support Group Facilitation, Family Strengthening and Education around HIV, TB and STI's.*

### Reaching Communities, Restoring Lives

In March 2025, we celebrated the launch of our beautiful new hub in the Eastern Cape, a milestone moment for Living Hope. This space will empower our team to serve and transform lives for generations to come. We were honoured to share the day with our cherished partners, friends, and the local community. We are deeply grateful to everyone who contributed to making this vision a reality. Your generosity has created a vital hub for Living Hope's mission in the region.

Over the past year, we saw a **24%** growth in people served in the Eastern Cape, resulting in **19,110** individuals receiving care and empowerment

through skills development, expanded health services and outreach, thanks to generous support from donors and PEPFAR. This funding allowed us to grow our team, including a registered nurse, and extend care into five communities across East London. This past year, we performed **2741** HIV Tests with counselling, connected **1386** medical defaulters back to care, did **1380** home visits and ran weekly support groups for those on chronic medication. In clinics and at community outreaches, we did **7830** HIV Talks, empowering people with the knowledge to stay healthy and thrive. Our First Thousand Day's and Moms programme saw **416** moms connected to the programme, a **54%** growth over last year.

### Preventing Barriers to Education: Changing the Narrative

In the Eastern Cape, school dropout is a major challenge. When we learned that children weren't attending school because families couldn't afford uniforms, we stepped in. Through a generous partner, **171** Grade One learners received a uniform, stationery, and a school bag. Now these children are in school, and our team has led **103** Life Skills classes and weekly devotions, building trust with the school, parents, and community. Through practical care, we're sharing God's love and restoring hope.

### Looking Ahead: Growing Hope

In the year ahead, we're launching Life Skills sessions at Longilanga High School, and expanding our Health Care to new communities. With your continued support, we remain committed to walking alongside communities, bringing hope, healing, and transformation.

*Note: Each programme report includes Eastern Cape statistics, which are counted toward Living Hope's overall totals.*

*By Pumla Madliwa*





## Community Based Health Services

*Impacting the community through access to health care, preventative care, chronic disease management, mental health support, and health education and outreach events.*

### Healing from Within: A Year of Compassionate Care and Transformation

Living Hope's Community-Based Health Services (CBHS) brought hope and healing to **57,371** individuals through **103,069** home visits and **578,411** interventions in both Western and Eastern Cape. Our team delivered thousands of chronic medication parcels, led **171** outreaches, and completed **7,746** HIV Tests in the Western Cape and **2,741** in the Eastern Cape, bringing essential care directly into homes. Through medical visits, education, and testing, we helped restore dignity and strengthen lives, guided by our person-focused mission to build healthier communities.

Although the prevalence of hypertension and diabetes continues to rise, we are encouraged by a noticeable deceleration in the rate of increase over the past year, **4.5%** for hypertension and **2.8%** for diabetes. This marks a significant improvement compared to the 2023–2024 period, during which hypertension increased by 11% and diabetes by 18%. However, Non-communicable diseases remain a growing contributor to the overall burden on health care services within our communities.

### Faith and Wellness: A Journey of Personal Renewal

Daily, we support hundreds of patients on the road to health, like our support of an elderly client living alone who was struggling with chronic conditions. With consistent medical care, emotional support, and encouragement, she began to thrive, gaining confidence, adhering to her treatment plan, and joining our Diabetes Support Group. Her journey reflects the power of personalised care and meaningful community connection.

### Looking Ahead: A Vision for Wellness

As we move forward, our focus is shifting toward health promotion and disease prevention. With strengthened partnerships and a growing team, we are building a future where wellness is not only treated but nurtured, protected, and celebrated.

**57,371**  
Individuals  
Served

**578,411**  
Impact  
Interventions

**103,069**  
Home Visits  
**18,417**  
Chronic Parcels  
Delivered



*By Joy Truter*



514

Individuals  
Served

11

Student Graduates

71,761

Interventions

Scan Me



## Agricultural Training

*Helping people earn their way out of poverty through a practical Agricultural and Business Training Programme, developing future farmers for South Africa.*

### A Year of Cultivating Hope

This year, our agricultural programme reached **514** individuals, celebrated **11** graduates, and welcomed **8** new enrollees, each one a seed of transformation, planted with purpose and nurtured by hope. With **71,761** interventions, our impact stretched across agricultural training, business development, and community support.

We're especially excited by our growing customer base, from local restaurants and small retailers to a rising number of spaza shops now stocked with fresh produce, bringing nutritious food and renewed dignity to under-resourced communities. Every harvest continues to cultivate hope, resilience, and lasting change.

### Seeds of Vision: “We are ready to lead” - The Three Ninjas

This year marked a bold expansion into the Eastern Cape. At our Eastern Cape hub, three graduates, Lutho Nombeke, Axolile Hlasela, and Mfundiso Giwu, affectionately known as the “Three Ninjas”, launched Living Hope’s Eastern Cape Agricultural Initiative. After an 18-month internship in Cape Town, they returned home, equipped with skills and vision, transforming idle land into opportunity. Their story reflects the heart of our mission: raising leaders who multiply impact.

### Looking Ahead: Growing with Purpose

We're excited to launch a new seed germination tunnel and Mobile Chicken Coops, both aimed at enhancing biodiversity, sustainability, and training opportunities.

As we expand in the Eastern Cape and strengthen our Cape Town programme, we remain committed to cultivating hope, one seed, one story, one life at a time.

*By Chantal Liebenberg*





## Health Care Centre

*Our Health Care Centre provides physical rehabilitation, social support, palliative care, spiritual care, nursing, and recuperation following hospitalisation and respite care for the community. We seek to positively influence our patients' quality of life, helping them lead healthier lives, no matter their illness.*

### Twenty Years of Healing, A Legacy of Hope

This year, we joyfully celebrated **20 years** of compassionate, Christ-centred care, a milestone marked by **317** patients served and over **173,988** care interventions. With an average stay of **33.5** days and **88%** occupancy, our Centre has remained a place of healing and hope. We were also thrilled to see our clinical capacity grow, as both our doctor and a registered nurse completed their Palliative Care studies, equipping us to serve with even greater excellence.

### Two Stories That Moved US

In our care, dignity was restored. One man, aged 64 and never registered at birth, received his first ID and a SASSA pension after 417 days with us, now living safely in an old-age home.

Another, abandoned at a clinic, found refuge at our Centre and, after 12 years of separation, reunited with his family in Gqeberha, buying his first plane ticket with his grant. These are not just stories of healing, but of lives reclaimed.

### Looking Ahead: More Stories to Heal, More Lives to Love

As we step into the future, we do so with a deep sense of purpose. We remain committed to delivering excellent, person-centred health care that honours every individual's story. We aim to continue setting the standard for compassionate, integrated care, where physical, emotional, and spiritual healing meet.

We trust the One who leads us. With each patient we welcome, we are reminded that excellence is not just a goal, but a reflection of God's love at work through our hands.

*By Margaret Roberts*

**173,988**  
Care  
Interventions

**88%**  
Occupancy

**317**  
Patients  
Served





5,302

Individuals  
Served

1343

Social Work Cases  
Connected to  
Care

71,696

Impact  
Interventions

Scan Me



## Family Strengthening

*We seek to build resilience in children and families through the provision of Early Intervention services, First Thousand Days work, Disabilities Support Groups, Gender Based Violence work, Trauma care and Counselling, as well as Advocacy for vulnerable children.*

### A Year of Restoration and Impact

Between April 2024 and March 2025, Living Hope's Family Strengthening Department supported **5,302** individuals through **71,696** interventions, walking closely with families in crisis. From parenting education and trauma support to health awareness and Early Childhood Development (**1887** Support Group attendances), our team offered care, dignity, and restoration. Key programmes addressed Gender-Based Violence, Disability Support, and the vital First Thousand Days initiative, nurturing families from the very beginning. A further **441** children received school uniforms and the necessary supplies to enable them to access school.

### A Mother's Journey to Safety

One young mother gave birth under dire circumstances and was discharged from the hospital with nowhere to go. Carrying her newborn, she began walking toward Ocean View alone and desperate.

A compassionate stranger noticed her distress and contacted Living Hope. Our team found her living in an uninhabitable pigeon loft. Through emergency relief and family reconciliation, her dignity was restored, and she reintegrated into a safe, loving home. Her story is a powerful reminder of how, through God's grace and the support of our funders, lives are not only touched but truly transformed.

### Looking Ahead: Building Stronger Families

In the year ahead, we will expand Early Childhood and GBV prevention programmes, strengthen Disability Support partnerships, and launch new initiatives like Family Resilience Workshops and Fatherhood Engagement Sessions. With continued support, we remain committed to protecting children, empowering caregivers, and building stronger, more resilient families.

*By Doiline Maisiri*





## Recovery

*Our structured, comprehensive programme seeks to break the chains of addiction, holistically transforming people's habits, lives and families.*

### Recovery: A Year of Healing and Hope

Over the past year, Living Hope's Recovery programme served **1,627** individuals, supported **95** aftercare clients, and celebrated **79** client graduations and **74** professions of faith. Through **289** support groups, **14,653** group sessions, **550** individual sessions, and over **109,594** impact interventions, we witnessed lives restored and families strengthened. An additional **650** family members were reached, showing the ripple effect of healing.

We were especially moved as many former clients returned to celebrate their recovery, sharing powerful testimonies of healing, growth, and renewed purpose. These reunions were more than celebrations; they were milestones of hope, reflecting the life-changing impact of our Recovery programme.

We are deeply grateful for increased funding from the Department of Social Services and the City of Cape Town. Their support has enabled us to expand our reach, strengthen services, and walk alongside more individuals on their journey to restoration. Every contribution and partner has helped bring hope to those once trapped in despair.

### From Despair to New Life

One young man, once overwhelmed by addiction and isolation, found his turning point through our Support groups and one-on-one counselling. Over time, he overcame his addiction and found faith, graduating with a renewed sense of purpose. Today, he volunteers to help others walk the same path he once struggled through.

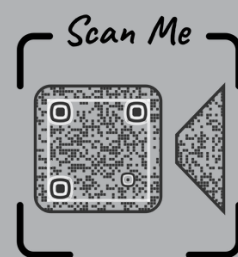
### Looking Ahead: Sharing Hope Beyond Our Walls

In the year ahead, we aim to share more transformation stories via CCFm radio and expand outreach, raising awareness and increasing access to recovery services in more communities.

**1,627**  
Individuals  
Served

**14,653**  
Group  
Sessions  
Held

**109,594**  
Impact  
Interventions



*By Olivia Andries*



**11,743**

Learners in  
school reached

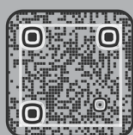
**1,426**

successfully  
placed in full-time  
work

**74,449**

attendances at  
Afternoon &  
Holiday Clubs

Scan Me



## Life Skills

*Equipping the next generation of School-Aged Children with Confidence, Character, and Hope. As well as helping young adults gain successful employment through our Job Centre and the Way to Work programme.*

### A Year of Growth and Impact

This year, our Life Skills programmes served **12,679** people across the Western and Eastern Cape, delivering **277,264** positive impact interventions. Through afternoon and holiday clubs, and school-based sessions, we provided consistent mentorship, values-based education, and practical life tools to help children and youth thrive.

### This Year Key Highlights:

We recorded **74,449** attendances in our Afternoon & Holiday Clubs (**55,844** in the Western Cape, and **18,605** in the Eastern Cape). These clubs provided structured, fun, and educational activities that fostered resilience, teamwork, and self-esteem. Our educators partnered with schools and delivered our new curriculum in over **200** classroom sessions, reaching **11,743** learners (**4,543** in the Western Cape and **7,200** in the Eastern Cape). Topics included identity, peer pressure, goal setting, and healthy relationships. Our Early Childhood Development (ECD) programme equipped teachers with effective strategies and impacted **1,268** children, laying a strong foundation for lifelong learning.

Quarterly Parenting Workshop nights drew **40–135** attendees per branch. We piloted a five-session curriculum, with **22** parents completing the first cohort, an encouraging start for future rollouts. For our Dignity Days & The Eve Project, we hosted self-esteem and hygiene events for girls, including a March session with **45** participants and an 8-week course. The Eve Project distributed **978** sanitary pad packs, helping girls stay in school. With support from generous partners, children enjoyed enriching day outings like Cape Point hikes, snake shows, and obstacle courses. A highlight was the young men's Eastern Cape campout, where fun sparked meaningful conversations on integrity and purpose. Our Job Centre supported **3,360** individuals, with **1,426** placed in full-time employment, highlighting the strong link between Life Skills and economic empowerment.

### Looking Ahead

Looking to 2026, we plan to expand into more schools and strengthen our Job Centre, empowering young people to lead with integrity, compassion, and purpose.

*By Candice Vigis & Danielle Schneider*





## Training and Wellness

*Our programme aims to foster healthy connections with God, oneself, and others, addressing relational, spiritual, and physical distress through compassionate interventions.*

### A Year of Impact and Transformation

This past year, we had the privilege of walking with **1,245** individuals, including **230** staff and **1,622** community members, through counselling, wellness programmes, and spiritual care. Each interaction was an opportunity to bring healing, growth, and hope.

One of the highlights was sharing our Fresh Start curriculum with Community Health Workers in Capricorn and Masiphumelele. In one session, two women publicly committed their lives to the Lord, a powerful moment of breakthrough. Their words said it best: "It felt like a huge burden was lifted off my shoulders." Another shared, "It brought me even closer to God." These stories remind us that healing is not just physical or emotional, it's deeply spiritual too.

### Grief to Grace: One Man's Healing Journey

A 39-year-old man, devastated by the sudden loss of his sister, came to Living Hope seeking support. Grief had disrupted his life, leaving him unable to sleep or focus. Through our Pathway to Peace counselling and the compassionate care of our team, he found understanding, healing, and spiritual renewal. By the end of his journey, he had rediscovered peace and left with a heart full of hope.

### Looking Ahead: Expanding Hope

In the coming year, Living Hope aims to deepen partnerships with corporate companies, broaden Wellness services, and host a local Family Day to engage staff and their children.

We also plan to extend team-building, devotionals, and training to staff in new branches, including one into the Free State, ensuring unity and holistic care across all regions.

We trust that as we expand, God will continue to guide our steps and deepen our impact.

**By Sue Shoultz**

**1,245**  
Community-based  
Clients  
Served

**230**  
Staff  
Served



**43,602**

Individuals  
Served

**302,000+**

Hot  
Meals  
Served

**554,196**

Impact  
Interventions

Scan Me



## Community Response

*Our team seeks to meet and advocate for the basic needs of the communities we serve: from the most vulnerable to those needing urgent assistance in the face of disasters.*

### From Hunger to Hope

Between April 2024 and March 2025, our team reached **43,602** individuals through over half a million interventions, meeting people in their homes, informal settlements, and vulnerable communities with practical help and heartfelt care.

We responded to **54** fires, supporting **1,456** people with essentials like clothing, bedding, and food parcels.

During floods, we reached **8,166** individuals, showing up in waterlogged areas with relief and reassurance. At the heart of our daily work were the Cooking Mamas, serving over **302,000** hot meals to the elderly, chronically ill, and child-headed households, bringing not just food, but comfort, dignity, and hope.

### Ubuntu in Action: Stories of Compassion

When a grandmother was hospitalised unexpectedly, her young grandchildren were left alone. Our Cooking Mamas stepped in with daily meals and emotional support until she recovered, an inspiring act of Ubuntu.

In another story of hope, **4,245** meals were served to child-headed households, supporting **79** children weekly. These children, once hungry and at risk, have returned to school with full stomachs and bright dreams.

### Looking Ahead

Rooted in our Biblical mandate to love our neighbour, we remain committed to responding quickly, compassionately, and prayerfully. With **11,894** donations received, we are deeply grateful to every supporter, bringing restoration where it's needed most.

**By Avril Thomas**





## Chaplaincy

*Providing spiritual guidance, opportunities to worship, resources, and pastoral assistance to staff and people we serve living with illness, poverty, and hardship, empowering them to overcome challenges and struggles in their lives.*

### From Grief to Grace: A Year of Spiritual Impact

This past year, our chaplaincy programme expanded its reach in powerful ways: **2736** patient one-on-one visits were undertaken, **794** individuals made professions of faith, we connected **571** people to local churches, and **58** prayer walks were held. Staff engaged deeply through the Alpha Course, and **34** staff members learned how to authentically share their faith.

These efforts reflect a growing movement of faith, unity, and transformation across our communities.

### A Journey Through Loss and Faith

Amid of deep grief over his grandmother's illness, a young man from Masiphumelele found hope through the care of Living Hope's nurses, counsellors, and chaplaincy team. Supported through his sorrow, he experienced healing and renewed faith. Months later, he returned with a smile that spoke of peace and transformation. He shared how, through this difficult time, he had come to trust God and was stepping into a new season with hope.

His story is a beautiful reminder that even in sorrow, restoration is possible through love, faith, and community.

### Looking Ahead: Advancing the Kingdom

As we look to the future, we plan to expand spiritual care further across all branches, including newly acquired ones in the Free State.

More team-building, devotionals, and outreach events are planned to ensure every staff member finds a joyful space to serve.

*"See, I am doing a new thing! Now it springs up; do you not perceive it?" Isaiah 43:19*

**By Noloyiso Mzizana**

**794**

Professions  
of  
Faith

**2736**

Chaplaincy  
One-on-ones

**58**

Prayer  
Walks  
Held



121,412

Individuals  
Served

10

Main  
Focus  
Areas

1.8 Mil

Impact  
Interventions

## Monitoring and Evaluation

Living Hope's Monitoring & Evaluation system is a cornerstone of our commitment to accountability, transparency, and continuous improvement. By systematically collecting and analysing data on impact interventions across all of our programmes, we can demonstrate the effectiveness and impact of our efforts to our stakeholders, including donors, community members, and partner organisations. This data-driven approach allows us to provide clear evidence of our progress towards our mission of serving communities in need, ensuring that resources are used prudently and efficiently.

### Tracking Impact, Strengthening Change

I'm glad to report that from April 2024 to March 2025, Living Hope served **121,412** people through over **1.8 million** impact interventions.

Across 10 focus areas, each one a reflection of God's faithfulness and our team's unwavering commitment to bringing hope and healing. **Community Response** reached the most people, **36%** of all served and delivered **29%** of all interventions. **Community-Based Health Services** grew significantly, reaching **11,600** more people than the previous year. **Family Strengthening** more than doubled its interventions, especially through Early Childhood Intervention and First Thousand Days. The **Health Care Centre** also saw a **23%** rise in people served. Our **Life Skills** programmes recorded an outstanding **74,449** attendances across Afternoon and Holiday Clubs, reflecting strong engagement and the growing impact.

### Tracking Progress for Improvement

To ensure continuous growth, **34** goals were set and monitored through our Quality Improvement work. Monthly, cross-departmental teams reviewed progress, documented changes, and shared learnings, keeping us audit-ready and focused on excellence.

### Looking Ahead: Strengthening for Greater Impact

We are steadfast in our commitment to strengthening our systems, ensuring they more effectively measure impact, inform decisions, and catalyse meaningful transformation.

By continuously refining our tools and processes, we aim to foster smarter learning, generate stronger evidence, and drive deeper, lasting change for the communities we serve.

**By Tawanda Mutsigwa**





## Strategic Developments

### Bringing Hope Further: Two Strategic Developments for the New Financial Year

As we look to the future with faith and expectancy, Living Hope is excited to announce two strategic developments that will expand our Kingdom impact and strengthen our mission to Bring Hope, Break Despair, and Build Africa. These changes reflect our commitment to serving individuals, families and communities with dignity, purpose, and opportunity.

#### Welcoming Morning Star into the Living Hope Team

We're growing, and it's a story of unity, purpose, and shared vision. We are thrilled to welcome the incredible Morning Star team in the Greater Welkom & Kutlwanong area, in the Free State, into the Living Hope team on 1 January 2026!

Founded in the same month and year as Living Hope (2000), Morning Star is faithfully serving over 2,000 children, youth, and families, primarily affected by HIV/AIDS, with compassion and care.

Now, together, we'll expand that impact through our whole-person model: integrating health care, life skills, family strengthening and skills development. With your support and prayers, we're building a legacy of resilience and joy across the Free State and beyond.

#### Expanding Skills, Empowering Communities: A New Chapter Begins

Additionally, we are thrilled to share that in October 2025, we will expand into Philippi, Cape Town, by integrating the Skills Development programming and Social Enterprises from Hope Africa Collective, a partner in community upliftment.

This includes Life Development, Trade Skills, and Hair & Beauty training, along with two innovative enterprises: The Printery and Themba Tots. These additions enhance our Skills Development and Enterprise Development capacity, helping individuals and families thrive with dignity and purpose.

Both developments reflect our long-term commitment to Bring Hope, Break Despair and Build Africa. Thank you for partnering with us as we step boldly into the future, Bringing Hope where it's needed most.

***By Victor Thomas***



217

Permanent  
Staff

291

Volunteers  
&  
Students

3

New  
Partnering  
Organisations

# Human Resources

## Serving with Excellence and Heart

Living Hope's impact is only possible because of the incredible people behind it. In January, we celebrated **25 years of ministry**, a milestone that speaks to God's faithfulness and the unwavering dedication of our staff and volunteers.

This year, an average of **217** permanent staff were supported by **291** volunteers and students, including International volunteers, Community Health Workers, and Agricultural Training Students.

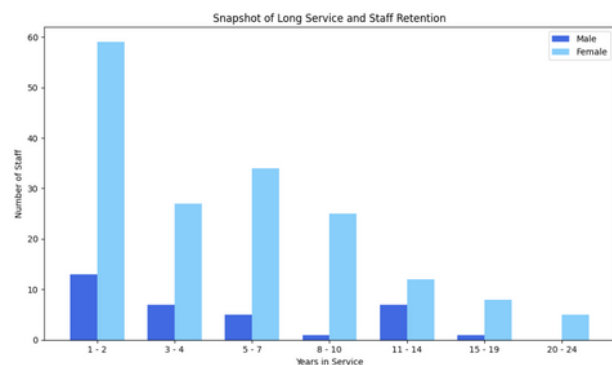
Each person brought compassion, skill, and heart to the work, making a difference not just in the lives we serve but in their journeys of growth and purpose.

Our presence in the communities is deeply rooted, and with two new partner organisations joining us, we're excited to keep building hope together.

## Staff Recruitment and Retention

Our average turnaround time for staff replacement, especially in the Health Care Worker Programme is less than **5 days** from the announcement of a vacancy. This is thanks to a proactive internal recruitment strategy that prioritises former students and volunteers, ensuring consistency, readiness, and retention.

Staff retention improved markedly this year, with a **33%** reduction in departures. This growing stability within our team strengthens our ability to serve consistently, build deeper relationships, and carry forward the heart of our mission with continuity and care.



## Long Service Recognition

Each year, we honour long-serving team members with a certificate, a gift voucher based on years of service, and a celebratory breakfast. This annual moment of gratitude reminds us how deeply blessed we are to journey with such faithful individuals.

We count it a joy and privilege to serve within Living Hope, bringing hope and breaking despair in the lives of others and our own.

**By Kerry-ann Ives**



# Finance

## A Year of Provision and Progress

To put it simply, God has provided. Living Hope experienced a year of strong growth, strategic capital investment, and faithful stewardship, culminating in an operational surplus of **R3.7 million**, thanks to generous donors, effective cost management, and programme efficiency.

A total of **R14 million** was invested in key infrastructure projects, including the completion of the new Eastern Cape building (fully equipped), security upgrades at our Masiphumelele branch, replacement of ageing vehicles, and near-completion of solar installations. These improvements enhance service capacity and reduce long-term costs.

We successfully reduced administrative costs to just **13%** of total expenditure, underscoring our commitment to focused efficiency and maximising programme impact.

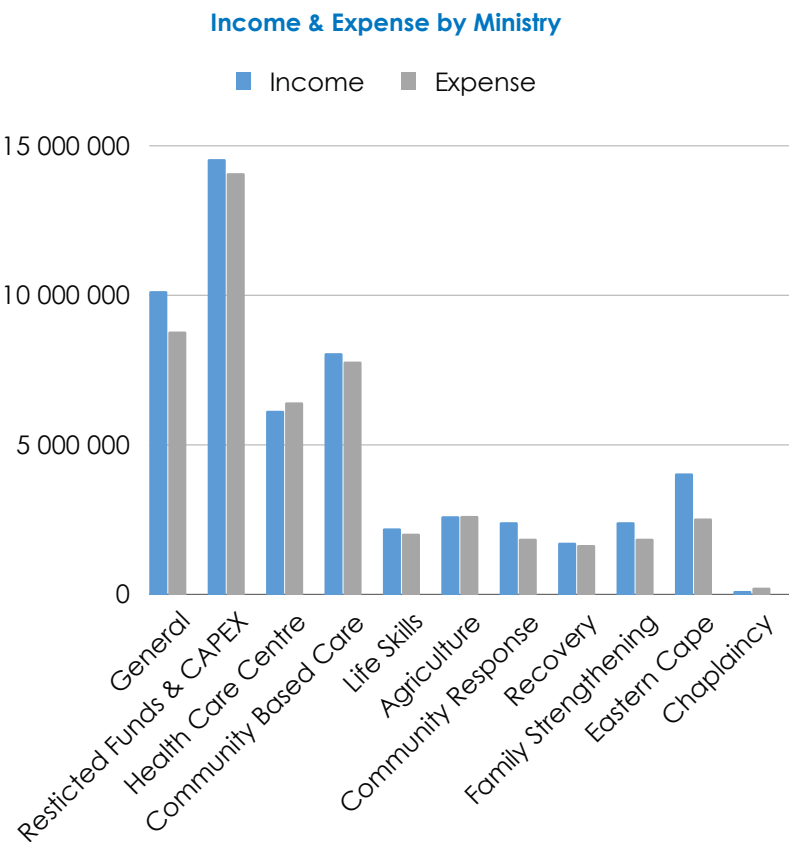
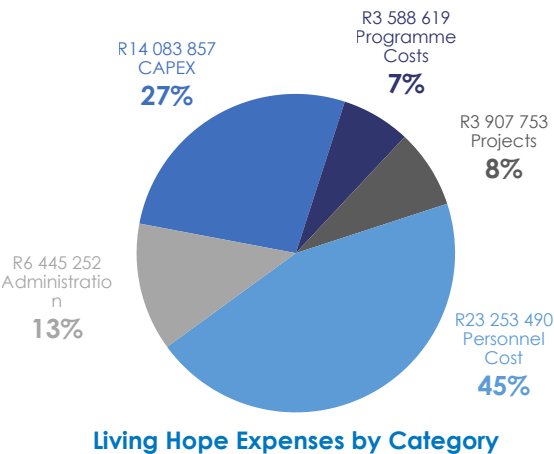
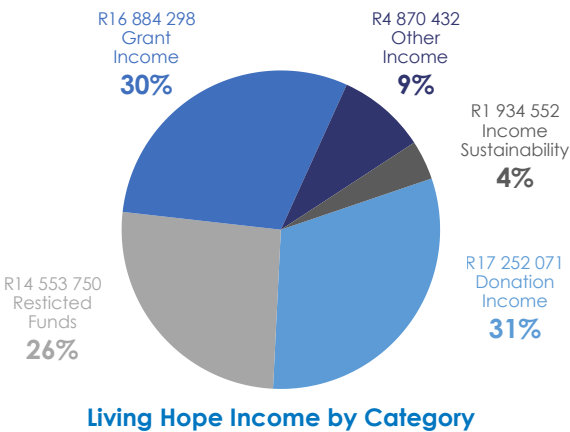
## Sustainability and Stewardship

We launched the **Legacy of Hope Endowment Fund** to support long-term sustainability. Though still in its early stages, the fund has already received **R4.3 million** in designated gifts, helping secure the future of life-changing ministry work across all areas.

## Looking Ahead: Positioned for Greater Impact

The rise in restricted giving shows growing alignment between donor priorities and our strategic vision. Living Hope is now well-positioned to expand its reach in healthcare, counselling, and poverty alleviation. For full financial details, please refer to the Living Hope Audited Financial Statements 2025. We are deeply grateful to every donor whose generosity fuels lasting transformation.

By Jessica Bennett





# Donor Acknowledgements

67 Kids to School	In2Food
AirLiquide	Intaba Coaching
Ambactus Group	Ndihluthi Stew
API Education Foundation	Nolands
Brandsma, Peter & Linda	Novus Holdings
Beckman, Jon & Denise	One More Child
Brentwood Baptist Church	Optis Capital
Bronner Burgess Memorial Fund	Pathcare
Brookwood Baptist Church	Patterson & Cooke Consulting
Caterware Connection	PEPFAR
Chets Creek Church	Rector, Reeder & Lofton, PC
City of Cape Town	River Rock Church, Inc.
Clifford Harris Trust	Rolf-Stephan Nussbaum Foundation
Compassus	SA Harvest
Cross Church DFW	Seven Silos
Extreme Response	Shades Mountain Baptist Church
Estate of Arnold and Suzanne Grapel	SweetPeas
First National Bank	The Lord's Team House
Food Forward	The Jensen Family
Henk Joubert	The McCann Charitable Fund
Hidden Treasure	The McGowan Family
KelPak	The Modglin Family Foundation
KemKlean	Tourvest Restaurants
King of Kings	Western Cape Government
Lawa Estates	Western Cape Department of Health & Wellness
MasiCorp	Western Cape Department of Social Development
MegaTech	Wiegand Morning Star Foundation, Inc
Mountain Brook Baptist Church	Walton, Dr. Phil & Mrs.
Mountain Brook Community Church	Wilson Family Trust
	Wilson, Aaron & Laura

We extend our heartfelt gratitude to every donor, whether publicly recognised, choosing to remain anonymous, contributing monthly, or among the many generous supporters whose gifts are immense in impact. Your contribution as part of the team that brings hope, breaks despair and builds into Africa possible.

The Board of Trustees, together with our Management and Staff, deeply appreciate every donation received. Each contribution makes a meaningful difference, and we are truly grateful for your partnership.

Please note that the content of our programmes is developed by Living Hope and may not necessarily reflect the views of our donors.



## Opportunities to Partner

### Individuals

Regular giving, monthly, quarterly, or annually, is one of the most effective ways to support Living Hope. Consistent donations help us plan and sustain programmes. Even modest gifts make a lasting difference. In the past year, every **R17 (\$1)** helped positively impact a life.



You can also support once-off projects that align with causes close to your heart.

Living Hope is a registered Public Benefit Organisation (PBO) and offers Section 18A tax certificates for qualifying donations (up to 10% of taxable income). In the USA, we can offer 501 © 3 tax certificates and can receive shares.

### Corporate Giving (through our PTY – Privately Owned Company)

Businesses can make a meaningful impact while earning full B-BBEE scorecard points by partnering with our 100% Living Hope Trust-owned, Black-Owned Level 1 B-BBEE company:

- Qualify for Socio-Economic and Enterprise Development
- Receive a 135% value-add
- Fulfil compliance while creating a lasting impact
- Section 18A Certification

### Churches, Trusts & Foundations

Churches, charitable trusts, and foundations play a vital role and can support CSI-aligned initiatives such as health, food security, and skills development. This year, we had **21 overseas Mission Teams** consisting of **316 individuals** join us on-site, partnering with us to serve the communities we work with and encourage our staff.

### Legacy Giving

Leave a Legacy of Hope through:

- Bequests in your will
- Charitable remainder trusts
- Life insurance or retirement accounts
- Real estate gifts
- Endowed funds in your name
- In 2025, we launched the Legacy of Hope Endowment Fund to secure long-term sustainability and deepen transformation.
- For more information on giving opportunities, contact [marks@livinghope.co.za](mailto:marks@livinghope.co.za)

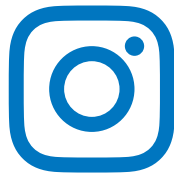




## Connect with Us



Bringing Hope, Breaking Despair, Building Africa



@LivingHopeZA



LivingHopeSouthAfrica



Living Hope



LivingHope.co.za





Bringing Hope, Breaking Despair, Building Africa

#### How to Donate

[www.livinghope.co.za/donate](http://www.livinghope.co.za/donate)

Account Holder: LivingHopeTrust

Account Number: 62061847748

Branch code: 202300

Bank: First National Bank

Type of account: Savings Account

Reference: Your email



Living Hopes accepts secondhand donations. These can be dropped at our Capri campus.

#### Visit Our Charity Shop

Address: 169 Main Rd, Muizenberg

#### South Africa

7 Kommetjie Main  
Road,  
Opposite Food Zone,  
Capri, 7975

(+27) 21 784 2800  
[office@livinghope.co.za](mailto:office@livinghope.co.za)

PO Box 1700  
Sun Valley, 7985  
South Africa

#### USA

Living Hope  
623 Tom Brewer Road  
Loganville, GA 30052  
Tel: 770-879-8411

#### UK

Living Hope  
76 Gilnahirk Road,  
Belfast BT5 7DJ  
Tel: +44 7858 277427



LivingHopeSouthAfrica



@LivingHopeSA



[www.livinghope.co.za](http://www.livinghope.co.za)



LivingHope